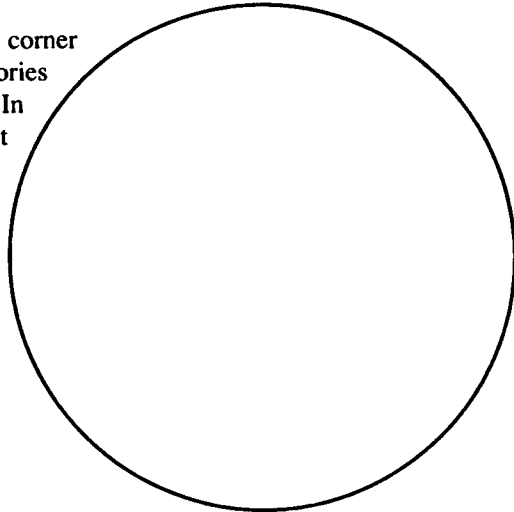


# Wyoming Certified Land Corner Recordation Certificate

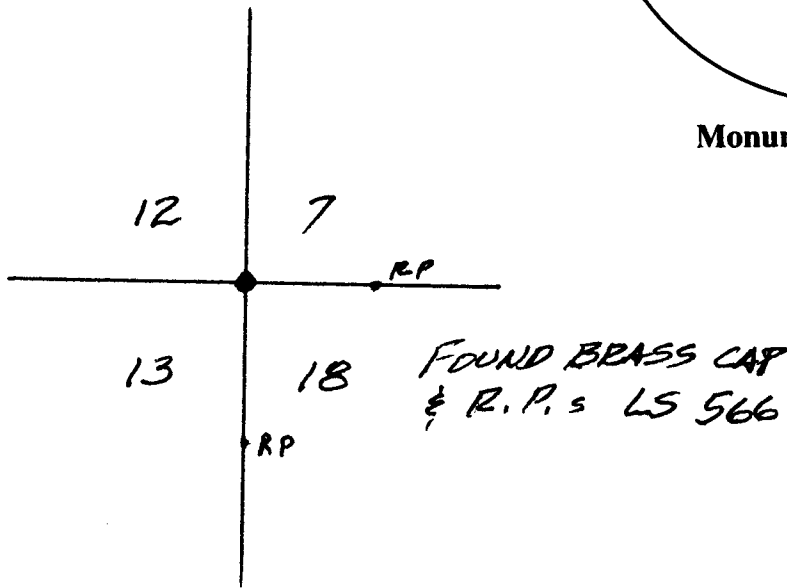
*This form is to be completed in accordance with W.S. 36-11-101, printed in black ink or typed, and shall be for one individual corner.*

Describe below, or show in sketch attached to this form, the corner evidence found. Include condition and type of monument, accessories and ties. Describe any maintenance or rehabilitation performed. In the circle to the right, show monument inscription. If monument is determined lost or obliterated, restate the GLO or BLM original field note record; describe or show the procedure used to reestablish the corner and all data as above for a found monument.



**Monument Inscription**

Field Date \_\_\_\_\_ Office Reference \_\_\_\_\_



**State of Wyoming**  
Office of County Clerk  
County of Laramie

This Certified Land Corner Recordation Certificate was filed for record on the 10<sup>th</sup> day of Oct, 1991, in Book No. T 13N, R 67-68W on Alpha-Numeric coordinates J-1 and was noted on the Cross Index Plat.

*Janet C. Whitehead*  
\_\_\_\_\_  
County Clerk

Corner Type:  
 Aliquot Corner     Other

Section(s) 7, 12, 13, 18 Meridian 6<sup>th</sup> P.M.

Corner Name SEC. COR. Township T 13 N Range 67-68 W Page \_\_\_\_\_

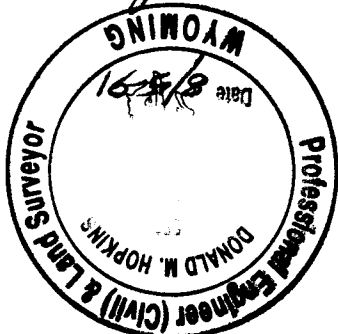
Sheet \_\_\_\_\_ of \_\_\_\_\_

91 OCT 18 PM 1 25  
090858

Telephone, FAX  
City, State, ZIP  
Street Address  
Mailing Address  
Company or Agency

Chayanda, WY 82003  
632-4763  
Box 6156  
Don Hopkins & Assoc.

I, DONALD M HOPKINS, Wyoming PLS/PE 558 certify that I, or others under my supervision, have performed the work as described above and completed this form.



Signature, Seal, and Date  
Sheet \_\_\_\_\_ of \_\_\_\_\_

**Certification**

Scale Factor \_\_\_\_\_  
Latitude \_\_\_\_\_  
North (Y) = \_\_\_\_\_  
Zone \_\_\_\_\_  
W WC EC E  
feet/meters  
 NAD 1927  NGVD 1929  NAD 1983  NAVD 1988  
 Longitude \_\_\_\_\_  
Geoid Height \_\_\_\_\_  
 EL = \_\_\_\_\_

**State Plane Coordinates (optional)**

1	2	3	4	5	6	7	8	9	10	11	12	13	14	15	16	17	18	19	20	21	22	23	24	25	
A	+	+	+	+	+	+	+	+	+	+	+	+	+	+	+	+	+	+	+	+	+	+	+	+	+
B	+	+	+	+	+	+	+	+	+	+	+	+	+	+	+	+	+	+	+	+	+	+	+	+	+
C	+	+	+	+	+	+	+	+	+	+	+	+	+	+	+	+	+	+	+	+	+	+	+	+	+
D	+	+	+	+	+	+	+	+	+	+	+	+	+	+	+	+	+	+	+	+	+	+	+	+	+
E	+	+	+	+	+	+	+	+	+	+	+	+	+	+	+	+	+	+	+	+	+	+	+	+	+
F	+	+	+	+	+	+	+	+	+	+	+	+	+	+	+	+	+	+	+	+	+	+	+	+	+
G	+	+	+	+	+	+	+	+	+	+	+	+	+	+	+	+	+	+	+	+	+	+	+	+	+
H	+	+	+	+	+	+	+	+	+	+	+	+	+	+	+	+	+	+	+	+	+	+	+	+	+
I	+	+	+	+	+	+	+	+	+	+	+	+	+	+	+	+	+	+	+	+	+	+	+	+	+
J	+	+	+	+	+	+	+	+	+	+	+	+	+	+	+	+	+	+	+	+	+	+	+	+	+
K	+	+	+	+	+	+	+	+	+	+	+	+	+	+	+	+	+	+	+	+	+	+	+	+	+
L	+	+	+	+	+	+	+	+	+	+	+	+	+	+	+	+	+	+	+	+	+	+	+	+	+
M	+	+	+	+	+	+	+	+	+	+	+	+	+	+	+	+	+	+	+	+	+	+	+	+	+
N	+	+	+	+	+	+	+	+	+	+	+	+	+	+	+	+	+	+	+	+	+	+	+	+	+
O	+	+	+	+	+	+	+	+	+	+	+	+	+	+	+	+	+	+	+	+	+	+	+	+	+
P	+	+	+	+	+	+	+	+	+	+	+	+	+	+	+	+	+	+	+	+	+	+	+	+	+
Q	+	+	+	+	+	+	+	+	+	+	+	+	+	+	+	+	+	+	+	+	+	+	+	+	+
R	+	+	+	+	+	+	+	+	+	+	+	+	+	+	+	+	+	+	+	+	+	+	+	+	+
S	+	+	+	+	+	+	+	+	+	+	+	+	+	+	+	+	+	+	+	+	+	+	+	+	+
T	+	+	+	+	+	+	+	+	+	+	+	+	+	+	+	+	+	+	+	+	+	+	+	+	+
U	+	+	+	+	+	+	+	+	+	+	+	+	+	+	+	+	+	+	+	+	+	+	+	+	+
V	+	+	+	+	+	+	+	+	+	+	+	+	+	+	+	+	+	+	+	+	+	+	+	+	+
W	+	+	+	+	+	+	+	+	+	+	+	+	+	+	+	+	+	+	+	+	+	+	+	+	+
X	+	+	+	+	+	+	+	+	+	+	+	+	+	+	+	+	+	+	+	+	+	+	+	+	+
Y	+	+	+	+	+	+	+	+	+	+	+	+	+	+	+	+	+	+	+	+	+	+	+	+	+
Z	+	+	+	+	+	+	+	+	+	+	+	+	+	+	+	+	+	+	+	+	+	+	+	+	+

**Directions for using the Cross Index Plat**

Section, quarter and sixteenth corners will be marked with a dot at the corner location. The alpha-numeric coordinate number is then determined for the intersection of the two lines. A corner that applies to two or more townships shall be filed under all that apply by the use of photo copies.  
 Closing corners will be indexed under the township in which they control ownership. For lying between grid designations, mark the appropriate grid area with a dot and use the index code to the north and west (local systems may be used if the method is approved by the County Surveyor or Clerk and a written description of its use is filed in the front of each book of certificates).